

# PHILIPS

Heated  
straightening brush

StyleCare Essential

Extra-large brush area

ThermoProtect technology

Tourmaline ceramic coating



BHH880/00



## Naturally straight hair in 5 minutes\*

Smooth, shiny, frizz-free hair

Reveal naturally straight, beautifully shiny hair in just 5 minutes. Our ThermoProtect technology and bristle design work together for healthy-looking, frizz-free hair.

### Care and protect

- Tourmaline ceramic coating
- ThermoProtect technology
- 2 temperature settings to suit your hair type
- Triple bristle design

### Ease of use

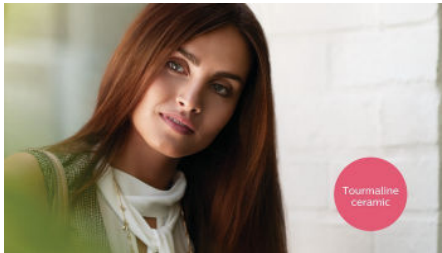
- Large paddle-shaped brush
- Fast heat-up time
- Ready to use indicator light
- 1.8 m cord for maximum flexibility
- Swivel cord



[asimpleswitch.com](http://asimpleswitch.com)

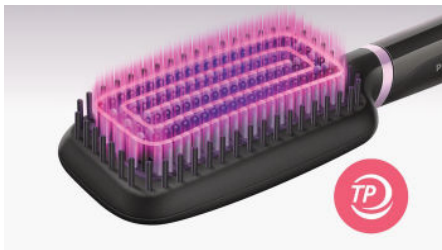
# Highlights

## Tourmaline ceramic coating



Tourmaline ceramic coating for shiny, smooth, frizz-free hair.

## ThermoProtect technology



ThermoProtect technology maintains a constant temperature across the brush to prevent overheating for protected, healthy-looking hair.

## 2 temperature settings



Two temperature settings (170°C and 200°C) to best suit your hair type.

## Triple bristle design



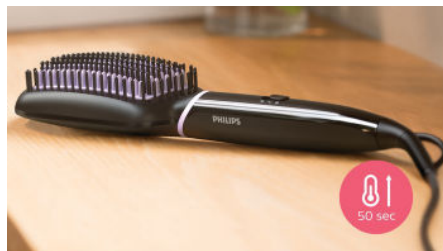
Triple bristle design gently detangles and straightens while protecting your scalp from heat.

## Paddle-shaped brush



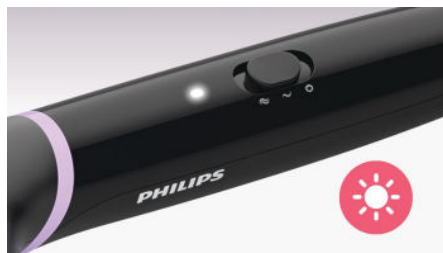
The paddle-shaped design straightens more hair in one go.

## Fast heat-up time



Ready to use in 50 seconds.

## Ready to use indicator light



LED light indicates when the brush is ready to use.

## 1.8 m cord



1.8 m cord.

## Swivel cord



Swivel cord for comfortable use.



[asimpleswitch.com](https://asimpleswitch.com)

## Philips Green Logo

Philips Green Products can reduce costs, energy consumption and CO2 emissions. How? They offer a significant environmental improvement in one or more of the Philips Green Focal Areas — Energy efficiency, Packaging, Hazardous substances, Weight, Recycling and disposal and Lifetime reliability.

# Specifications

## Caring technologies

Tourmaline ceramic coating  
ThermoProtect

## Features

Temperature Settings: 2 settings, 170°C and 200°C

Brush shape: Paddle

Brushing area (mm): 116 L x 60 W

Number of heated bristles: 111

Auto shut-off: after 60 min

## Ease of use

Storage hook

Swivel cord

## Technical specifications

Product size (mm): 350 L x 75 W x 48 D

Total number of bristles: 247

Heater type: PTC

LED light indicator: White colour

Cord length: 1.8 m

Voltage: Universal V

## Service

2 year guarantee

