



MeacoDry Arete[®] One

Introducing the quietest, most efficient combined dehumidifier and air purifier ever made.



Designed in the UK

EXCELLENCE IN ALL THINGS

Stylishly simple

Designed in Britain, with the input of more than 2000 customers, we have created a combined dehumidifier and air purifier that's a new benchmark in style and quality.



Designed in the UK

www.meaco.com

EXCELLENCE IN ALL THINGS

Optimised for Britain

Every aspect of the design and performance of this dehumidifier has the British user and climate in mind.

For example: you told us that you wanted a dehumidifier you could push up against the wall to save space on your landing or in your hallway. With Arete, you can.

Arete dehumidifiers are designed to work best between 10°C and 20°C to extract the maximum amount of water from the air when you need it most. Standard machines from the Far East are designed to work best at 27°C. Arete is designed for Britain.



Designed in the UK

www.meaco.com



EXCELLENCE IN ALL THINGS

Smart laundry

Arete dries clothes. A single button switches on maximum performance for six hours, and Arete monitors energy consumption and turns the compressor off when the relative humidity reaches 35%rh to save power. The powerful fan remains on throughout to ensure your clothes are dried quickly and efficiently.

Smart humidity

To get the best out of Arete all you have to do is press a single button. Arete will take care of the rest - deciding on the correct fan speed and switching performance up or down as required.

Night mode

Arete is so quiet, you can use it in or close to your bedroom without disruption. Just press the Night mode button to switch off all lights and bleeps, and the machine runs in quiet mode. Check the status at any time, knowing that after five seconds it will revert back into Night Mode.



Designed in the UK

www.meaco.com

Our quietest dehumidifier ever

This new range of Arete combined dehumidifiers and air purifiers have been five years in the design process. For the past two years we have been working on making them the quietest dehumidifiers on the market because we know how important low noise levels are to you.

The incredibly low noise levels are:

MeacoDry Arete One 20L is just 40dB

MeacoDry Arete One 25L is just 42dB

Incredibly quiet!

EXCELLENCE IN ALL THINGS



Designed in the UK

www.meaco.com



EXCELLENCE IN ALL THINGS

Low energy benefits

We know how much our customers love having dehumidifiers that are cheap to run. Normally, when you push noise levels down energy consumption goes up. But with Arete, all that has changed. We can now offer highly efficient running costs, high extraction rates and the lowest-ever noise levels.

Just one of the reasons why we are so proud of Arete.

(see the last page for full specifications)



Designed in the UK

www.meaco.com

Simple controls

No complicated controls: one press of the large Smart Humidity button is all you need to set up your dehumidifier and walk away. Arete will do the rest.

Meaco control logic

Arete is designed to maintain a steady humidity in your home whilst minimising electricity consumption. Our control logic also manages the fan speed to increase extraction rates when required and switch to a quieter mode when the target humidity is almost reached.

When the humidity has been reached Arete will switch off for 30 minutes, after which it samples the air for changes and responds accordingly.

Child lock

Just in case small fingers want to play with Arete, you can lock them out!



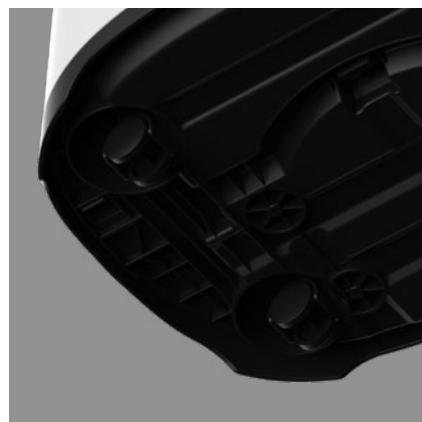
Designed in the UK

It's all in the detail



Push it against the wall

Side air intakes allow the dehumidifier to sit discreetly against the wall.



Feet hiding the wheels

Castors are hidden behind feet that help the dehumidifier blend into any room.



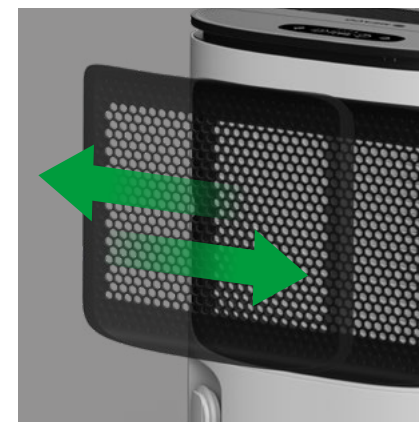
Hidden handle

Sleek lines hide a neat carry handle.



Cable tidy

Keep wires out of the way and tangle free when not in use.



Sliding filter

Easily clean the filter from the side, without moving the dehumidifier.



Designed in the UK

Why the tank is important

You will probably only touch the control panel for a few seconds each day. But you will be emptying the tank and dealing with the water on a regular basis. So we put a lot of time and attention into getting it right.

We made the tank extra large at 4.8 litres so that you don't have to empty it so often. And when you do, it's easy.

Before the 'tank full' light comes on, the machine has done a final blow through so that no water should drip from the spout when you remove the tank.

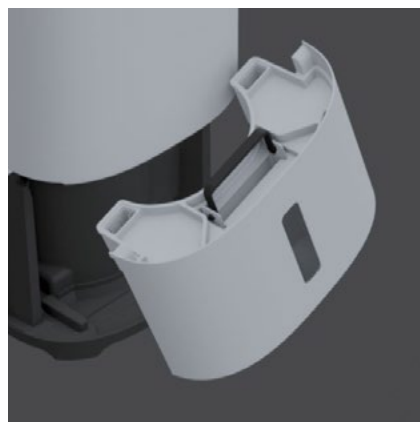
We have also designed the tank so it's easy to grip, pull out and replace.

The tank has a cover and a carry handle so you don't spill a drop, and you can pour from both the left and right sides, making life easy.

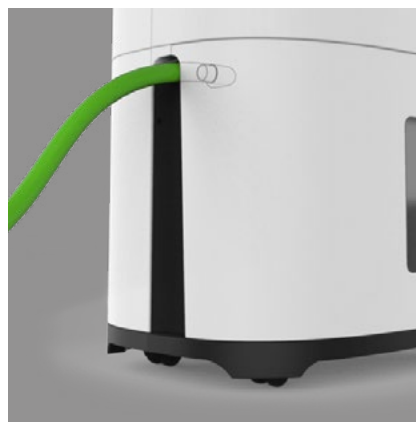
And if you want to fit a hose for continuous drainage then you can and there is even an adapter in the lid of the tank so that you can use a standard length of garden hose. This saves the planet from more plastic and it saves you money.



Easy to remove the tank



Easy to empty the tank



Use your garden hose for drainage



Designed in the UK

Accessories



Pump

- Self-powered by the dehumidifier.
- Drains water up to 2.5m high.
- Comes with 3 metres of hose.
- Pump is automatically triggered every time the tank is full.



Remote humidistat

- Coming summer 2021.
- Bluetooth connection with the dehumidifier (Arete Two and Arete Three).
- Dehumidifier is controlled by the reading from the humidistat.
- Place the humidistat anywhere in the home where the damp is worst.
- High accuracy +/-1.5%rh sensor with low long term drift.
- Large clear display to check readings around the house.
- Runs off 4 AA batteries (not supplied).



HEPA filter

- H13 medical grade HEPA filter to help clean the air.
- 99.75% retention of particles as small as 0.3 micrometers (μm) in diameter.
- 75% larger than the filter on the Low Energy range for better cleaning.
- Arete can be used in a dedicated air purifier mode when you don't need to dry the air.



Designed in the UK

EXCELLENCE IN ALL THINGS



Designed in the UK

www.meaco.com

Specifications

| | MeacoDry Arete One - 20L | MeacoDry Arete One - 25L |
|--------------------------|---|---|
| Type | Compressor | Compressor |
| Variable humidistat | Yes between 40%rh and 70%rh | Yes between 40%rh and 70%rh |
| Extraction rate | See extraction rate data tab | See extraction rate data tab |
| Noise level | 38 and 40dB(A) | 40 and 42dB(A) |
| Night mode | Yes | Yes |
| Laundry mode | Yes | Yes |
| Air flow | Low fan speed: 145m ³ /h and high fan speed 160m ³ /h | Low fan speed: 150m ³ /h and high fan speed 175m ³ /h |
| Water tank size | 4.8L | 4.8L |
| Continuous drainage | Yes | Yes |
| HEPA filter | H13 | H13 |
| Fan speeds | 2 (automated depending on humidity level) | 2 (automated depending on humidity level) |
| Refrigerant | R290 / 65g | R290 / 90g |
| Operating temperatures | +5° to +35°C | +5° to +35°C |
| Approximate house size | Flats to 5 bed houses | Flats to 5 bed houses |
| Power consumption | See extraction rate data tab | See extraction rate data tab |
| Power supply | 220-240V, 50Hz | 220-240, 50Hz |
| Nett weight | 15kgs | 16kgs |
| Gross weight | 16.4kgs | 17.4kgs |
| Product dimensions (HWD) | 562 x 376 x 232mm | 562 x 376 x 232mm |
| Box dimensions (HWD) | 662 x 424 x 328mm | 662 x 424 x 328mm |



Designed in the UK

Extraction rate data

| Test condition | Extraction rate | | Power consumption | |
|------------------|--------------------------|--------------------------|--------------------------|--------------------------|
| Model | MeacoDry Arete One - 20L | MeacoDry Arete One - 25L | MeacoDry Arete One - 20L | MeacoDry Arete One - 25L |
| 10°C and 50%rh | 2.0L/day | 2.15L/day | 179W | 215W |
| 10°C and 60%rh | 3.4L/day | 3.54L/day | 180W | 220W |
| 20°C and 50%rh | 5.78L/day | 6.99L/day | 211W | 260W |
| 20°C and 60%rh | 8.5L/day | 10.73L/day | 216W | 267W |
| 30°C and 60%rh | 13.78L/day | 16.76L/day | 265W | 330W |
| 26.7°C and 60%rh | 11.9L/day | 14.34L/day | 239.6W | 305W |
| 10°C and 80%rh | 5.68L/day | 7.19L/day | 184W | 230W |
| 20°C and 80%rh | 14.02L/day | 17.53L/day | 225W | 280W |
| 30°C and 80%rh | 20.2L/day | 25.67L/day | 281W | 365W |

